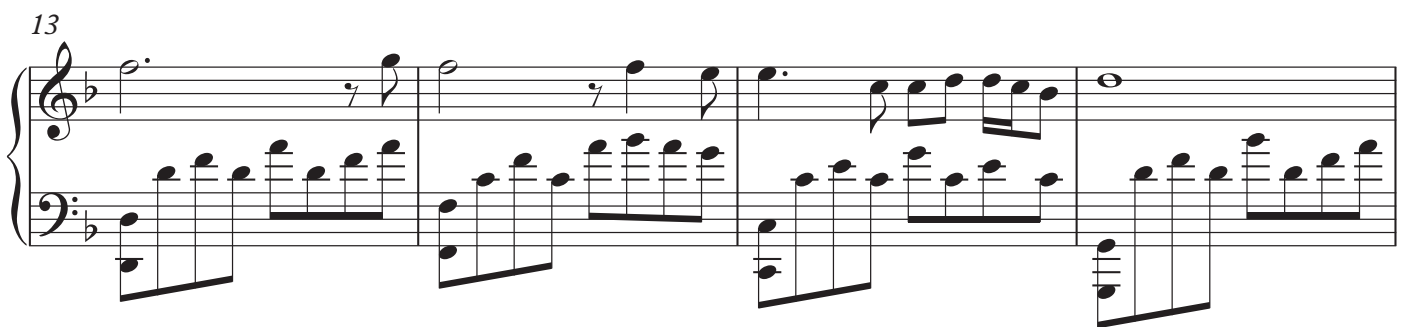


Set Fire To The Rain

Adele



21

Measures 21-24. Treble clef: Measure 21 has a dotted quarter note, eighth notes, and sixteenth notes. Measure 22 has eighth notes and sixteenth notes. Measure 23 has a dotted quarter note, eighth notes, and sixteenth notes. Measure 24 has eighth notes and sixteenth notes. Bass clef: Steady eighth-note accompaniment.

25

Measures 25-27. Treble clef: Measure 25 has a dotted quarter note, eighth notes, and a half note. Measure 26 has eighth notes and sixteenth notes. Measure 27 has a half note and a whole note. Bass clef: Steady eighth-note accompaniment.

28

Measures 28-31. Treble clef: Measure 28 has chords and eighth notes. Measure 29 has eighth notes and sixteenth notes. Measure 30 has eighth notes and sixteenth notes. Measure 31 has eighth notes and sixteenth notes. Bass clef: Steady eighth-note accompaniment.

32

Measures 32-35. Treble clef: Measure 32 has chords and eighth notes. Measure 33 has chords and eighth notes. Measure 34 has a whole note and a half note. Measure 35 has eighth notes and sixteenth notes. Bass clef: Steady eighth-note accompaniment.

36

Measures 36-39. Treble clef: Measure 36 has a whole note and a half note. Measure 37 has eighth notes and sixteenth notes. Measure 38 has eighth notes and sixteenth notes. Measure 39 has eighth notes and sixteenth notes. Bass clef: Steady eighth-note accompaniment.

40

Measures 40-43 of a piano arrangement. The key signature has one flat (B-flat). The melody in the right hand features eighth and sixteenth notes with some ties, and a fermata over measure 42. The left hand plays a steady eighth-note accompaniment.

44

Measures 44-47 of a piano arrangement. The melody in the right hand consists of eighth-note chords and single notes. The left hand continues with eighth-note accompaniment.

48

Measures 48-50 of a piano arrangement. Measure 49 features a long, sustained chord in the right hand. The left hand continues with eighth-note accompaniment.

51

Measures 51-54 of a piano arrangement. The melody in the right hand includes eighth notes, quarter notes, and a half note with a fermata. The left hand continues with eighth-note accompaniment.

55

Measures 55-58 of a piano arrangement. The melody in the right hand features eighth-note chords and a half note with a fermata. The left hand continues with eighth-note accompaniment.

59

Measures 59-62 of a piano arrangement. The music is in 4/4 time with a key signature of one flat (B-flat). The right hand features a melody of eighth and quarter notes, often beamed in pairs, with occasional rests. The left hand provides a steady accompaniment of eighth notes, frequently beamed in groups of four. The piece concludes with a double bar line at the end of measure 62.

63

Measures 63-66 of the piano arrangement. The right hand continues with a melodic line of eighth and quarter notes, including some triplet-like groupings. The left hand maintains the eighth-note accompaniment pattern. The system ends with a double bar line at measure 66.

67

Measures 67-70 of the piano arrangement. The right hand's melody becomes more complex with some sixteenth-note runs and beamed eighth notes. The left hand's accompaniment remains consistent. The system concludes with a double bar line at measure 70.

71

Measures 71-74 of the piano arrangement. The right hand features a more active melody with frequent beaming and some sixteenth-note passages. The left hand continues with the eighth-note accompaniment. The system ends with a double bar line at measure 74.

75

Measures 75-78 of the piano arrangement. The right hand's melody is highly active, featuring many beamed sixteenth and thirty-second notes. The left hand continues with the eighth-note accompaniment. The system concludes with a double bar line at measure 78.

79

Measures 79-82 of a piano arrangement. The right hand features dense, blocky chords in the first two measures, followed by a melodic line in the third and fourth measures. The left hand plays a steady eighth-note accompaniment throughout.

83

Measures 83-86 of a piano arrangement. The right hand has a more active melody with some rests, while the left hand continues with the eighth-note accompaniment.

87

Measures 87-90 of a piano arrangement. The right hand returns to dense block chords in the first two measures, then moves to a melodic line. The left hand maintains the eighth-note accompaniment.

91

Measures 91-94 of a piano arrangement. Both hands feature a continuous eighth-note melody, with the right hand's melody being more active than the left's.

95

Measures 95-98 of a piano arrangement. The right hand continues with the eighth-note melody. The left hand has long, sustained chords in the first two measures, followed by a more active line in the third and fourth measures. The piece concludes with a final chord in the right hand.